



2020/2021

ANNUAL REPORT

Prepared by: Sarah Cable, Outreach Coordinator

TABLE OF CONTENTS

• Year in Review Letter from Margaret Robinson	2
• Success in Numbers	3
• Program Evaluation	4
• Faculty Activity System (FAS)	5
• IEPA Student Faculty Committee	6
◦ ISC Membership	7
◦ Unity Appreciation Day	8
◦ Interdisciplinary Grand Rounds Proposal	10
• IEPA Curriculum Committee	11
◦ All Professions Day	12
◦ Unity Clinic	13
• IEPA Faculty Development Committee	16
◦ Seed Grants	17
◦ Team and Leadership Awards	18
◦ Unity Week and Interdisciplinary Collaboration Symposium	20
◦ IPE Certificate Program	25
• IEPA Research Committee	26
• Looking Forward: Appendix	27
◦ Unity Series Proposal	28
◦ IPE Activities	31
◦ Simulation Proposal	32
◦ 2021-2022 Unity Clinic Proposal	34
◦ OKCPS Outreach Proposal	35
◦ 2021-2022 ISC Representatives	38



A YEAR IN REVIEW

The work we do in advancing the paradigm shift of healthcare education is not only necessary but has the added benefit of being incredibly rewarding. The product of our work is care provided to hundreds of primary care patients and thousands of vaccine recipients, education of thousands of students, an impact on hundreds of faculty and staff, and a legacy of programming that is sustainable and meaningful. Our annual report highlights the work of the past year and outlines the impressive plans of our committees.

Noteworthy is the progress of interprofessional education initiatives during the international pandemic. Our health teams across the enterprise have met the challenge of thinking creatively, flowing with constant changes and challenges, and maintaining our focus on inclusion and engagement. The year ahead is bright and we are well on our way to meeting the challenge of becoming a national leader in interdisciplinary programming. Thank you for your continued engagement. I look forward to working with you as we continue to grow!

**-Margaret Robinson,
Associate Director**

SUCCESS IN NUMBERS

50,000+

COVID-19 vaccine doses administered to the greater Oklahoma City community in collaboration with OU Health

2,300+

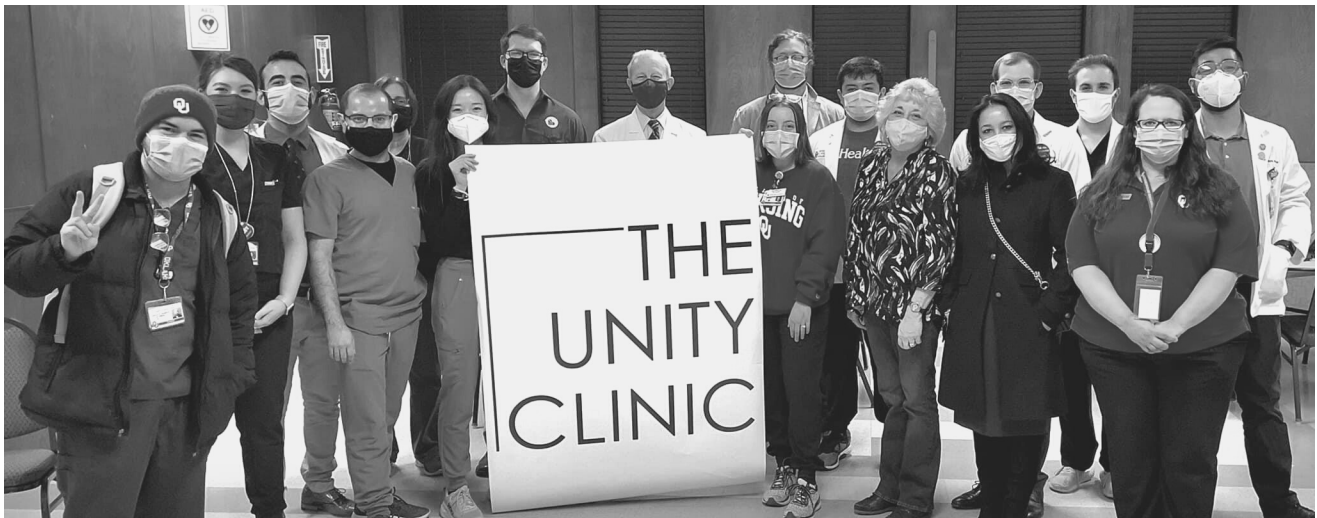
Student, Faculty, and Staff users enrolled in IPE D2L courses including: *COVID-19 Student Training, OUHSC Introduction to Interprofessional Education, and Unity Clinic Student-Led IPE Experience*

380+

Underserved patients who received care through the Unity Clinic in partnership with Good Shepherd Clinic and Cole Community Center

192

Faculty members contributing to IPE activities including: Unity Clinic, All Professions Day, clinical simulations, and the Interprofessional Educators and Practitioners Association (IEPA)



PROGRAM EVALUATION

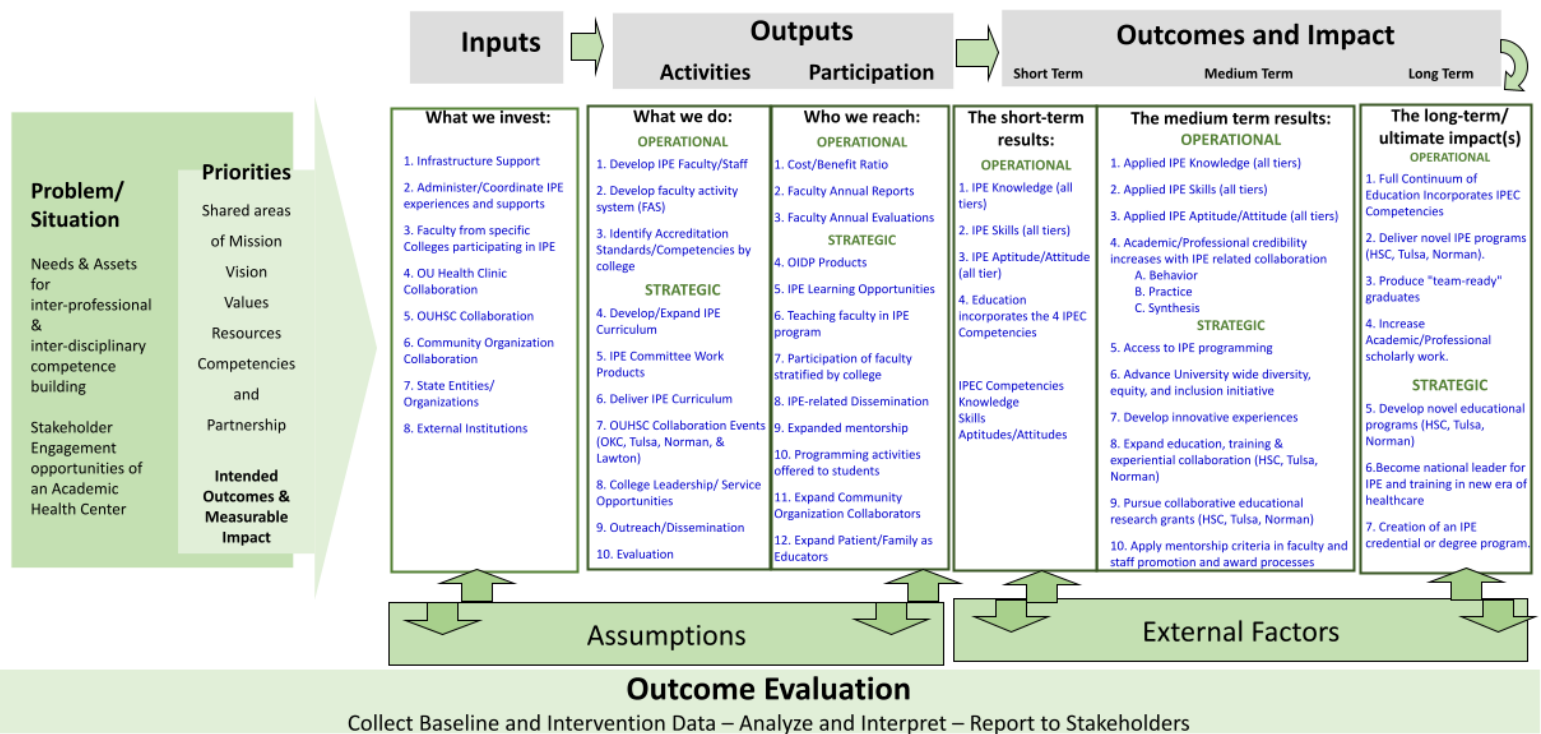
The Office of Interdisciplinary Programs is tasked with the development, implementation, and evaluation of campus-wide interprofessional education activities.

A key component of this work is ensuring that what we do is meaningful, impactful, and meets the needs of our participants. This ensures we are meeting the needs of the University of Oklahoma Strategic Plan and the OUHSC Academic Strategic Plan.

- The below "Logic Model" outlines the structure of our work. This is a living document, meaning it is routinely reviewed and updated. We are committed to progress and improvement and welcome suggestions.

OUHSC Interprofessional and Interdisciplinary Education – LOGIC MODEL

Plan/Program Theory – **Implement** - Evaluate



© 2021. OUHSC Office of Interdisciplinary Programs | Office of the Vice Provost for Academic Affairs and Faculty Development . University of Oklahoma Health Sciences Center



FACULTY ACTIVITY SYSTEM

As part of the University of Oklahoma Health Sciences Center Academic Strategic Plan Goal #2 related to Interdisciplinary Programming, OUHSC will be implementing a more efficient process for sharing, tracking, and reporting on faculty activities. The university will use the campus-wide Faculty Activity System or FAS (which was previously known as Digital Measures by Watermark), which is a web-based system that will allow you to more easily build and organize reports on teaching, research and service activities.

The program has been piloted with key stakeholders across the campus community over the course of the last year and a half. Coming Fall 2021 FAS will be available to all OUHSC faculty.

If you have any questions or would like more information about FAS please contact Dr. Ruby Sharif-Sandel at OUHSC-FAS@ouhsc.edu.

IEPA

STUDENT-FACULTY

INTERDISCIPLINARY STUDENT COUNCIL

The Interdisciplinary Student Council (ISC) is a group of students selected to represent each of the seven colleges on campus in tandem with the Student Government Association (SGA). The council works in conjunction with the IEPA Student-Faculty committee co-chairs to develop student-led interprofessional programming and to provide student perspective on curriculum initiatives.

GREAT DEBATE

As part of the annual GREAT Symposium hosted by the Graduate College, ISC member Clayton Sandel organized the first GREAT Debate. The debate featured two interprofessional teams comprised of representatives from each of the seven colleges.

UNITY APPRECIATION DAY

To recognize the dedication of the students, faculty, and staff who contribute to the Unity Clinic, the first annual Unity Appreciation Day was held on May 7, 2020. The Unity Clinic leadership honored five faculty members, six students, and two staff members for their efforts.

INTERDISCIPLINARY GRAND ROUNDS

As a new opportunity for interprofessional learning, the ISC has proposed piloting student-led Interdisciplinary Grand Rounds. This will be a monthly seminar discussion presenting content applicable to the Unity Clinic team-based treatment approach as developed and implemented by students with direction from faculty advisors and/or content experts.

INTERDISCIPLINARY STUDENT COUNCIL

2020-2021 MEMBERS



Danial Gebreili

*SGA Interdisciplinary
Education Liaison*



Sean Abbott

*SGA Interdisciplinary
Education Liaison*



Tate Atkinson

*College of Public
Health Representative*



Emily Carter

*College of Allied Health
Representative*



Tram Le

*College of Medicine
MD Representative*



Andre Gomez

*College of Medicine
PA Representative*



Taylor Fallin

*College of Pharmacy
Co-Representative*



Sarah Elkoubysi

*College of Pharmacy
Co-Representative*



Christina Ard

*College of Nursing
Representative*



Meagan Green

*College of Dentistry
Representative*



Clayton Sandel

*Graduate College
Representative*



The UNIVERSITY of OKLAHOMA HEALTH SCIENCES CENTER

Interdisciplinary Programs

OFFICE of *the* VICE PROVOST FOR ACADEMIC AFFAIRS & FACULTY DEVELOPMENT

UNITY APPRECIATION DAY

MAY • 7 • 2021
12PM-1PM





AWARDEES

Patient/Community Advocacy Award

- *Frieda Freeman-Cooper, MSW, LPN*
- *Robert Salinas, MD, CAQ(G)*

Student Advocate and Unity Champion Award

- *Margaret Robinson, MEd*

Outstanding Service Award

- *Addison Davis, College of Public Health*

IPE Innovation Award

- *Lin Goldston, MHA, CPHQ*

Student Leadership

- *Anna Sahlstrom, College of Pharmacy*

IPE Excellence Award

- *Ciarra Stapleton, College of Dentistry*
- *Ella Miller, College of Dentistry*
- *Emma C Brito, College of Dentistry*

Unity Clinic Champions

- *Vincent Dennis, PharmD, BCACP, CDE*
- *Elizabeth Koldoff, PhD, RN*
- *Theresa Murphy, MSN, MPH, RN-BC, PHCNS-BC*
- *Joanne Skaggs, MD*

Diversity and Inclusion Award

- *Riley Darby-McClure, College of Medicine*

INTERDISCIPLINARY GRAND ROUNDS

Proposal Synopsis:

Monthly seminar discussion presenting content applicable to the Unity Clinic team-based treatment approach as developed and implemented by students with direction for faculty advisors and/or content experts.

Goal:

Provide an opportunity for students to learn about, from, and with each other on a topic related to team-based care.

Participants:

Each presentation must be coordinated between two or more professions for content, delivery, and audience.

- * Interdisciplinary Student Council
- * Unity Clinic Executive Council
- * IEPA
- * Others to be identified

Delivery Times:

Lunch-time seminar in Sept/Oct/Nov/Feb/March/April

Content Areas:

Thematic content related to the treatment of underserved communities by interdisciplinary student teams. Examples may include diet related to dental health, physical barriers to access to care, pharmaceutical health literacy, etc.

Delivery Method:

Virtual with in-person delivery hosted at a different college each month

IEPA CURRICULUM

During the 2020-2021 academic year, we were pleased to pilot the Unity Series. While the series had to be adapted to virtual delivery due to the COVID-19 pandemic, we plan to offer a hybrid version for the 2021-2022 year.

The Unity Series is a collaboration between the Office of Interdisciplinary Programs, the Office of Diversity, Equity, and Inclusion, and OUHSC Student Affairs. The series consists of five stages of learning: awareness, service, practice, application, and synthesis.

At the completion of the Unity Series, students are eligible for one of two transcript notations. *Interprofessional Education Tier 1* will denote completion of the core experience and *Interprofessional Education Tier 2* will denote completion of the core experience in addition to participation in the student-led Unity Clinic. In recognition of their work students will also be able to purchase a cord to add to their graduation regalia.



ALL PROFESSIONS DAY

830 STUDENTS

early career students gathered virtually
in interprofessional teams



DEGREE PROGRAMS

29



programs were represented from
across the three OU campuses

68 FACILITATORS

trained faculty and staff
facilitators guided student teams



93% LEARNING

of students left with a greater
understanding of the Interprofessional
Education Collaborative Competencies





UNITY CLINIC

4
—

clinic sessions each week between two locations with our community partners: Good Shepherd Clinic and Cole Community Center (dedicated in February 2021)

18
—

different professions represented at Unity Clinic over the academic year

406
—

students from the College of Allied Health, College of Dentistry, Graduate College, College of Medicine, Fran and Earl Ziegler College of Nursing, College of Pharmacy, Hudson College of Public Health, and Anne and Henry Zarrow School of Social Work who participated in our most impactful interprofessional clinic year to date

VACCINE OUTREACH

In Spring 2021, the Unity Clinic student leadership was called upon by OU Health to help mobilize volunteers to aid in the COVID-19 vaccination effort. Without hesitation, our student leaders rose to the challenge. They facilitated the training of over 350 students in vaccine administration procedures, filled over 900 volunteer sign-up slots, and aided in the administration of over 50,000 doses.

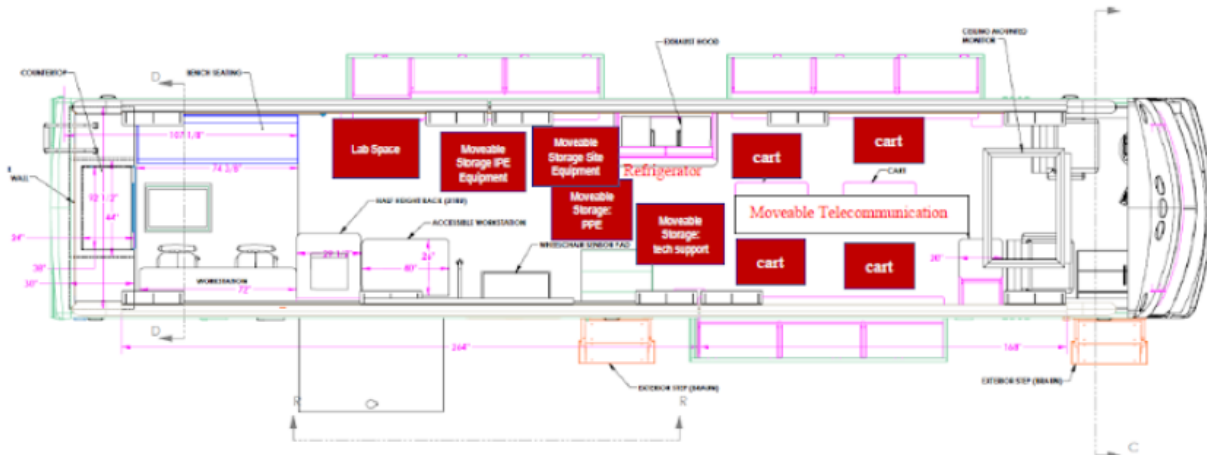
After the initial vaccine roll out, the Unity Clinic was designated the OU Health Vaccine Strike Team. They now host pop-up vaccination pods on a weekly basis with community partners in the greater Oklahoma City area.



Adapted from Farber proposal – IPE additions added in red

Description: Multipurpose use vehicle, w/equipment to be moveable, included telecommunication equipment in budget

Budget: \$800,000 including on-board equipment/telecommunication equipment



MOBILE OUTREACH VEHICLE

Summer of 2020, the Office of Interdisciplinary Programs in collaboration with the College of Medicine, received funding for a HRSA FY21 Supplemental grant which allocated \$1.1M for a mobile outreach vehicle (MOV). The unit will provide dual-use space for recruitment/outreach and IPE primary care mobile clinic.

We are excited to share that the vehicle has been purchased, and the mobile outreach initiative will be piloted Fall 2021. This includes a project mission to deliver outreach to prospective students, community preceptors, and learning opportunities for health professions students. With a focus on the needs of the tribal, rural, and underserved community and partnering with local stakeholders, the MOV will be available for site-visits, experiential learning activities, and collaborative health outreach.

IEPA FACULTY DEVELOPMENT

SEED GRANTS

The Wisdom Family Foundation offers seed grants to develop new and innovative curricular projects related to interprofessional education and practice. The foundation was pleased to award the grants to three programs this past year.

AWARDS

In honor of their exceptional contributions to interprofessional programming and team collaboration, the IEPA recognized the winners of the 2020 and 2021 Team and Leader of the Year awards during Unity Week.

UNITY WEEK

To celebrate National Interprofessional Healthcare Month, our annual Unity Week was held April 5-9, 2021. Each day featured information and activities related to interdisciplinary/interprofessional education. All campus community members were invited to participate in the virtual events through the week.

INTERDISCIPLINARY COLLABORATION SYMPOSIUM

Unity Week culminated in the first annual Interdisciplinary Collaboration Symposium. The virtual event featured 17 team-based presentations, 48 presenters, and seven posters.

CERTIFICATE PROGRAM

The Faculty Development committee has drafted a proposal for an IPE certification program for faculty, post-docs, and IPE champions (including learner leaders). The committee aims to open the program for enrollment in July 2022.



WISDOM FAMILY FOUNDATION

Interprofessional Education Research Seed Grants

Congratulations to the 2020-2021 Recipients

REFLECTING TOGETHER TO COMBAT IMPOSTER PHENOMENON

PI: Tina Dothard Peterson, PhD

SIMULATING END OF LIFE SCENARIOS: INTERPROFESSIONAL EOL COMMUNICATION

PI: Catherine Heith, MD, FAAP

INTERDISCIPLINARY HEALTH PROFESSION EDUCATION: A TEAM SCIENCE APPROACH

PI: Elizabeth Koldoff, PhD, RN



The UNIVERSITY of OKLAHOMA HEALTH SCIENCES CENTER

INTERPROFESSIONAL EDUCATORS *and* PRACTITIONERS ASSOCIATION

OFFICE of the VICE PROVOST FOR ACADEMIC AFFAIRS & FACULTY DEVELOPMENT

2020 & 2021 IEPA AWARDS

APRIL • 8 • 2021
12PM-1PM





AWARDEES

2020 Team of the Year: ***Interprofessional Trauma Simulation Team***

- *Bruna Varalli-Claypool, MHS, PA-C, Margaret Robinson, MEd, Scott Tatum, RN, BSIT, Fredrick "Kris" Miller, PhD, Mary Moon, PhD, Alix Darden, PhD, MEd, Carrie McClain, MHR, LPC, Alisa Cross, MD, Denise Bender, PT, JD, Med, FNAP, Mary Hudson, PhD, CCC-A, F-AAA, Robin White, MEd, RDMS, RDCS, RVT, Marsha Beatty, MPH, Lin Goldston, MHA, CPHQ, Danielle Pullen, Randy Claypool, Samuel Elder, MHS, PA-C, Chad Tiaden, PA-C, MHS*

2020 Leader of the Year

- *Katie Eliot, PhD, RDN/LD, FAND*

2021 Team of the Year: *Delivering Difficult News Simulation*

- *Catherine Heith, MD, FAAP, Teresa Fritz, LCSW, Sheryl Buckner, PhD, RN, ANEF, Timothy Braun, MHS, PA-C, Zack Dunnells, Madison Meder, MD, Carri Epperson, LCSW, Gabriela Purcarin, MD, Peggy Wisdom, MD, FAAN, Donna Fesler, MS, RN, Mark Fisher, PhD, RN, Melody Gallamore, MS, RN, Meadow Hazelhoff, LCSW, Elizabeth Koldoff PhD, RN, Theresa Murphy MS, RN, Linda Perron, MS, RN, Jaye Robertson, DNP, RN, Wanda Robinson PhD, RN, Cloe Sanders, LCSW*

2021 Leader of the Year

- *Denise Bender, PT, JD*

Interdisciplinary Collaboration Symposium

April 9, 2021

10:00 AM - 3:35 PM

ipe.ouhsc.edu/symposium



Presentation Schedule

All presentations will be 10 minutes long followed by a 5 minute Q&A period. Zoom link: tinyurl.com/IPESymposium

10:00 AM - 10:15 AM

Leading Students into Interprofessional Practice

Sheryl Buckner, PhD, RN, ANEF, Jaye Robertson, MA, MS, DNP, RN, CNEP, Paula Maisano, PHD, RN, CNE, Gerry Ibay, JD, MHA, Charlotte Kendrick, MSW, LCSW

10:20 AM - 10:35 AM

Evolution of Interprofessional Education, Practice and Assessment at an Academic Health Center

Angela Harnden, PhD, Vincent Dennis, Pharm.D., BCACP, CDE, Margaret Robinson, MEd, Melissa Craft, PhD, APRN-CNS, AOCN, FAAN, Dale Bratzler, DO, MPH

10:40 AM - 10:55 AM

Reproductive Health Symposium: The Benefits of an Interdisciplinary Approach

Lauren Oliver, Christen Jarshaw, Ian Peake

11:00 AM - 11:15 AM

A Collaborative Approach to Implementation of a Campus-wide Activity System

Ruby Sharif-Sandel, MD, PhD, Margaret Robinson, MEd

11:20 AM - 11:35 AM

Lumina: Interdisciplinary LGBTQ+ Collaboration

David Soto, Joanne Adams

11:40 AM - 11:55 AM

Making a Difference in Mothers' Health through an Interprofessional Approach

Katie Eliot, PhD, RDN/LD, FAND, Kathryn Konrad, MS, RNC-OB, LCCE, FACCE, Donna Wood, RDH, MS, MEd, PhD(c)

12:00 PM - 12:15 PM

University of Oklahoma Cleft lip and palate interdisciplinary clinic - over 60 year of experience in treating children with facial deformity

Fabio Ritto, DDS, MD, MS, PhD, Kevin Smith, DDS, FACS, FACD

12:20 PM - 12:35 PM

Unity in Action: Bringing Care to OKC's Vulnerable Populations

Spencer Hill, Joanne Skaggs, MD, Lin Goldston, MHA, CPHQ, Vincent Dennis, Pharm.D., BCACP, CDE, Elizabeth Koldoff, PhD, RN

12:40 PM - 12:45 PM

Developing a Mobile Pharmacy for an Interdisciplinary Student Clinic

Ishak Hossain, Anna Sahlstrom, Nichole Krug, Sarah El-Koubysi

1:00 PM - 1:15 PM

Interdisciplinary Student Council

Sean Abbott, Danial Gebreili

1:20 PM - 1:35 PM

Teaming from the start: A pilot program for team learning of technical skills and clinical reasoning with physical therapy, occupational therapy and nursing students

Denise Bender, PT, JD, MEd, FNAP, Jessica Tsotsoros, PHD, OTR/L, ATP, Loren Stein, MSN, RNC-NIC, Sheri Wainscott, PHD, RN, CNE

1:40 PM - 1:55 PM

Use of Nares Swab to De-escalate Vancomycin for Patients with Suspected Methicillin-Resistant Staphylococcus Aureus Infection

Nadeem El-Kouri, MD, Tashrique Rahman

2:00 PM - 2:15 PM

The GREAT Debate: A Team Presentation Event to Emphasize Interprofessional Education and Collaboration as well as Effective Communication

Amy Tucker, PhD, Clayton Sandel

2:20 PM - 2:35 PM

Rapid, Multidisciplinary Needs Assessment for Patients with COVID-19 Transitioning Hospital to Home

Amy Costner-Lark, DNP, APRN, FNP, Wanda Robinson, PhD, APRN-CNS, CNE, Susan Dresser, PhD, APRN-CNS, CCRN, FCNSI, Carrie Ciro, PHD, OTR/L, FAOTA, Shirley James, PT, PhD, MS

2:40 PM - 2:55 PM

Telemedicine Simulations for Professional Student Education

Blake Lesselroth, MD, MBI, FACP, FAMIA, Kristin Rodriguez, MPH

3:00 PM - 3:15 PM

Trauma Week: Interdisciplinary Teams and Trauma Care

Kylie Pethoud, MSW, Bruna Varalli-Claypool, MHS, PA-C

3:20PM - 3:35 PM

IPE & Covid-19 Response

Dale W. Bratzler, DO, MPH, Aaron Wendelboe, PhD, Margaret Robinson, MEd

Posters

All posters are available for viewing at:
ipe.ouhsc.edu/symposium/posters

Family and Community-Based Research: Can It Unify Professional Partnerships?

Elizabeth Koldoff, PhD, RN, Mary Hudson, PhD, CCC-A, Susan Sisson, PhD, RDN, CHES, FACSM

Interprofessional Mindfulness

Gerry Ibay, JD, MHA, B. Grace Bullock, PhD, Margaret Robinson, MEd

Effect of Inter-Professional Perioperative Simulation on Team Communication and Airway Fire Management

Carol Rogers, PhD, RN, Alisa Cross, MD, Edward Kosik, DO, Jason Lees, MD, Nicholas Schwier, PharmD

Self-Advocates as Medical Educators and Family-Advocates as Medical Educators (SAME-FAME): Collaborative Teamwork with Patients with Intellectual/Developmental Disabilities (I/DD) and Family Caregivers

Ellen Bannister, Lorrie Sylvester, PT, PhD, Nancy Ward, Jacqueline Devereaux, MA, Valerie N. Williams, PhD

Histology, Whole Slide Scanning, & Image Analysis Core Service at Stephenson Cancer Center

Kar-Ming Fung, MD, PhD, Muralidharan Jayaraman, PhD, Danny Dhanasekaran, PhD

Effects of the COVID19 Pandemic on Organizations Who Serve Individuals With Developmental Disabilities

Laura Shamblin, MD, Emily Isbill, Grace Eckstrom

Simulating End-of-Life Scenarios: Interprofessional End-of-Life Communication

Catherine Heith, MD, Terrie Fritz, LCSW, Zackery Dunnells, Gabriela Purcarin, MD, Sheryl Buckner, RN, PhD, Madison Meder, MD, Timothy Braun, PA-C, Peggy Wisdom, MD

CERTIFICATE PROGRAM

Proposal:

Interprofessional facilitation certificate program.

Participants:

Open to faculty, post-docs, and IPE champions (including learner leaders).

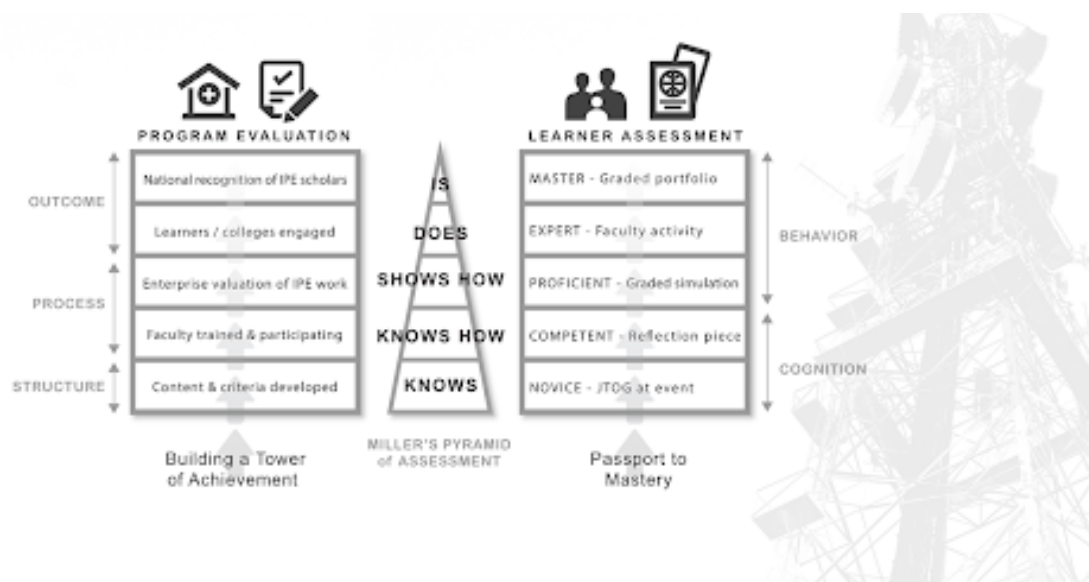
Purpose:

Certify foundational skills and competencies in interprofessional education and interprofessional work. Goal of university-wide recognition to be used towards promotion and tenure.

Time frame:

Pilot Fall 2022

- Year 1 (academic year) would be module learning in a hybrid format. Year 2 (academic year) allows the participant to choose how to engage and develop their work product. Complete the certificate in as little as 15 month or as long as 24 months.



IEPA RESEARCH

LIFE CIRCLE DIAGRAMS

The use of life circle diagrams as a tool for assessing learner growth was piloted in 2015. While it had promising results, analyzing student drawings by hand was too tedious a process to deploy on a larger scale. Over the last year, the tool was revisited and the research committee is now collaborating with the OU computer science program to work on the development of a method to streamline the process of analyzing the diagrams.

JEFFERSON TEAMWORK OBSERVATION GUIDE

As another method to evaluate learners, the Office of Interdisciplinary Programs has purchased a license for the use of the Jefferson Teamwork Observation Guide (JTOG) from Jefferson University. JTOG will be used to assess student performance in relation to IPEC competencies and evaluation of team outcomes.



LOOKING FORWARD

The following pages outline our proposals and plans for academic activities for the 2021-2022 year. We look forward to all that we can accomplish together in the months ahead.

If you have any questions or ideas for further collaboration, please reach out to one of our team members. Thank you!



Valerie N. Williams
PhD, MPA

*Vice Provost for Academic
Affairs & Faculty Development*
valerie-williams@ouhsc.edu



Margaret Robinson
MEd

Associate Director
margaret-robinson@ouhsc.edu



Angela Harnden
PhD

Program Evaluator
angela-harnden@ouhsc.edu



Rahma Osman
MHA

IPE Project Manager
rahma-osman@ouhsc.edu



Kylie Pethoud
MSW

IPE Simulation Manager
kylie-pethoud@ouhsc.edu



Ruby Sharif-Sandel
MD, PhD

IPE Project Coordinator
rabab-sharif@ouhsc.edu



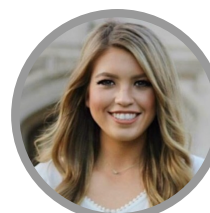
Sarah Cable

Outreach Coordinator
sarah-cable@ouhsc.edu



Tram Le

*Unity Clinic Chair,
IPE Graduate Student
Assistant*
tram-le-1@ouhsc.edu



Addison Davis

*Unity Clinic - Vice Chair of
Operations, IPE Graduate
Student Assistant*
addison-davis@ouhsc.edu



Brandon Moritz

*IPE/OUCHA Graduate
Student Assistant*
brandon-moritz@ouhsc.edu



Dominique Ropp

*Interdisciplinary Student
Council Chair
College of Pharmacy*
dominique-ropp@ouhsc.edu



Jeremiah McGuire

*Interdisciplinary Student
Council Co-Chair
College of Allied Health*
jeremiah-mcguire@ouhsc.edu

PROPOSAL: IPE Unity Series 2021-22

Last Update: May 20, 2021 Page 1 of 3

PROPOSAL

The HSC Office of Diversity Equity and Inclusions and the Office of Interdisciplinary Programs propose the below programming framework in collaboration with multiple campus projects/offices. The purpose of this proposal is to:

1. Provide continuity in programming and align campus-wide initiatives in goals and objectives, purpose
2. Reinforce learning with additional awareness, practice, and application methodology
3. Provide depth/breadth to campus-wide initiatives throughout a learner's campus experience

BENEFITS

Intent is to fulfill programmatic interprofessional accreditation requirements while:

- Providing meaningful team-based learning opportunities
- Ensuring all graduates have unique and distinctive preparation
- Engaging students and communities as team-members in curriculum development and delivery
- Striving to positively affect health team outcomes through collaborative team preparation

AWARENESS

HSC DEI Challenge (40 hours)

Yearlong asynchronous learning hosted by Office of Diversity, Equity & Inclusion
Focus: Deeper understanding of communities and patient backgrounds

- A first-year introduction to reinforce awareness of SDOH and health disparities
- Menu of approximately 40 hours of content selected by campus stakeholders
- Reinforce the concepts introduced in first-year Unlearning Bias coursework
- Menu options available before APD1, and pre/post APD2

Campus Unity Day(s) – ISC Grand Rounds (8 hours)

Proposal from Interdisciplinary Student Council, collaboration sought
Focus: IPE Collaboration, Spaces/Disciplines on campus

- A collaborative monthly discussion hosted in a variety of spaces on campus.
- Interactive discussion to engage other professions about other colleges/students at HSC

All Professions Day (APD) (4 hours)

Hosted by the Office of Interdisciplinary Programs
Focus: Professions on campus

- A first-year introduction to the different professions on campus.
- Introduction to the IPEC Competencies
- Opportunity to introduce series, intro to diversity/inclusion initiatives, micro-aggressions in communication, social determinants of health (SDOH), health disparities, lifestyle wellness

PROPOSAL: IPE Unity Series 2021-22

Last Update: May 20, 2021 Page 2 of 3

Unity in Health Symposium (2 hours)

Student-led initiative hosted by HSC Student Affairs

Focus: Other communities represented within the student body

- Engages students in introductory-level conversations exploring the various communities represented in the student population
- Compliments APD programming by expanding on the roles of different communities in team composition, respect for others
- May include supplementary student-led conversation groups following the event

Unity Symposiums (2 hours)

Student-led initiatives hosted by the Interdisciplinary Student Council

Focus: Patient populations

- Engages students in deeper-dive conversations exploring the various communities represented in Oklahoma and beyond for professional development
- Examples include the Lumina Leadership Series, Graduate College Professional Development Series, or the Reproductive Health Symposium

SERVICE LEARNING

Big Event (4 hours)

Student-led event hosted by HSC Student Affairs

Learning Level: Service Learning, Experiential

Focus: Community as team-member

- Hands-on service learning with community agencies
- Provides opportunity for interprofessional student teams to engage in non-health team-building while still engaging with the community
- May need to tie service-learning educational objectives

PRACTICE

Community-Informed Simulations (8+ hours)

Under development with collaboration from the Office of Interdisciplinary Program, Office of Diversity, Equity & Inclusion, OUHSC students, and community partners

Focus: Community as team-member

- Hands-on team-delivery of care simulation with a community member/agency included as team member for both curricular development and delivery
- Method: Self-Advocate/Family-Advocate as Medical Educator (SAME/FAME) model for content creation and implementation
- Various simulations may be offered, each focused on a different community
- Examples of communities for engagement: developmental disabilities, LGBTQ+, cultural/ethnic, socioeconomic, or specific health populations, mental health, lifestyle wellness
- Include training in multiple delivery settings, including telehealth
- Current initiative: LGBTQ+ Advisory Board developing 20-21 pilots

PROPOSAL: IPE Unity Series 2021-22

Last Update: May 20, 2021 Page 3 of 3

APPLICATION

Unity Clinic(s) (4+ hours)

Student-led initiative hosted by the Office of Interdisciplinary Programs

Focus: Communities near/around OUHSC, throughout Oklahoma

- Student-led, interprofessional clinic providing team-based care to the community
- Student volunteers from 18 professions
- Intent is to focus on patient-centered wellness initiatives
- Current initiatives include:
 - Mobile Outreach to Tribal, Rural and Underserved communities of Oklahoma (TRU-OK)
 - Good Shepherd Clinic diabetes clinic
 - Homeless Alliance/City of Oklahoma City/Community Care Telehealth Street Outreach
 - Community outreach with First Church Friday Clinic
 - Drug Recycling with Oklahoma Board of Pharmacy
 - Mobile Smiles with Oklahoma Dental Foundation
 - Policy research with Regional Food Bank of Oklahoma
 - Nutrition initiatives with Sodexo, ONIE, Harold Hamm, possible Food Pharmacies
- In the future, may require specific DEI and/or simulations completed prior to volunteer registration

SYNTHESIS

IPE Symposium – Unity Week (4+ hours)

Annual presentation day hosted by the Office of Interdisciplinary Programs

Focus: Teaming with application to communities near/around OUHSC, throughout Oklahoma

- Summative experience to conclude the threaded experience prior to graduation
- Students have requested an opportunity to “Practice my voice”
- Presentations, posters – productivity encouraged

At completion of the series, we propose the following be considered: Transcript notation, graduation cords, and specific student awards eligibility

CONTACT

Margaret Robinson, M.Ed.

Associate Director, Office of Interdisciplinary Programs
Office of the Vice Provost for Academic Affairs & Faculty Development
The University of Oklahoma Health Sciences Center
Bird Library, Office Suite 142 (Room 160)
P. O. Box 26901, Oklahoma City, OK 73126
Cell: (405) 822-3716 / Phone: [\(405\) 271-8001](tel:4052718001), X-30674
Margaret-Robinson@ouhsc.edu / <https://ipe.ouhsc.edu/>

INTERDISCIPLINARY / INTERPROFESSIONAL

2021-2022 EDUCATIONAL ACTIVITIES

Summer 2021

Fridays, June 11 - July 23	Summer Friday <u>Unity Clinic</u> at Good Shepherd Clinic
Friday, July 16	<u>2S-LGBTQ+ Community Informed Simulation Pilot</u>
Friday, July 16	AHSPA Summer Academy IPE Trauma Simulation
Friday, July 23	<u>IEPA</u> All Committees Retreat
Additional Dates TBD	<u>Unity Clinic</u> Leadership Retreat, OU Health Covid Vaccine Strike Team with <u>Unity Clinic</u>

Fall 2021

Week of August 23	<u>Unity Clinic</u> and <u>Intro to IPE</u> didactic courses in D2L open
Week of August 30	<u>Unity Clinic</u> Leadership Onboarding & Simulations
Thursday, September 2	<u>Unity Clinic</u> Simulation
Monday, September 6	Fall <u>Unity Clinic</u> Orientation (virtual)
Wednesday, September 8	Begin Fall Wednesday evening <u>Unity Clinic</u> at Good Shepherd Clinic
Thursday, September 9	Begin Fall Thursday evening <u>Unity Clinic</u> at Good Shepherd Clinic
Friday, September 10	Begin Fall Friday daytime <u>Unity Clinic</u> at Good Shepherd Clinic
Friday, September 10	Begin Fall Friday daytime outreach <u>Unity Clinic</u> at Cole Community Center Clinic
Friday, September 10	<u>All Professions Day One</u> (Virtual, All First-year Students)
Additional IPE Dates TBD	<u>Unity Clinic Orientation</u> (Weekly), Interdisciplinary Grand Rounds (Monthly, Student-led), <u>Community Informed Simulations</u> (Bi-weekly), Unity in Health Symposium, Reproductive Health Symposium, <u>HSC DEI Challenge</u> , <u>Graduate College Professional & Career Development Seminar Series</u>

Spring 2022

Thursday, January 27	<u>Unity Clinic</u> Simulation
Monday, January 31	Spring <u>Unity Clinic</u> Orientation (virtual)
Wednesday, February 2	Begin Spring Wednesday evening <u>Unity Clinic</u> at Good Shepherd Clinic
Thursday, February 3	Begin Spring Thursday evening <u>Unity Clinic</u> at Good Shepherd Clinic
Friday, February 4	Begin Spring Friday daytime <u>Unity Clinic</u> at Good Shepherd Clinic
Friday, February 4	Begin Spring Friday daytime outreach <u>Unity Clinic</u> at Cole Community Center Clinic
Friday, February 25	<u>All Professions Day Two</u> (Same Students as Fall 2021)
Monday, March 7	Deadline for IPE Graduation Recognition & Awards
Monday-Friday, April 4-8	<u>Unity Week</u> (Various Activities, Keynote Speaker)
Friday, April 8	<u>2nd Annual Interdisciplinary Collaboration Symposium</u>
Friday, May 6	<u>Unity Appreciation Day</u>
Additional IPE Dates TBD	<u>Unity Clinic Orientation</u> (Weekly), Interdisciplinary Grand Rounds (Monthly, Student-led), <u>Community Informed Simulations</u> (Bi-weekly), <u>GREAT Symposium</u> , <u>HSC DEI Challenge</u> , <u>Graduate College Professional & Career Development Seminar Series</u>

Course credit is built within individual University of Oklahoma degree requirements or approved courses. Application of credit and attendance requirements are determined by each participating program.



Interprofessional Simulation Plans – Working Draft

Last update 7/22/21

Project Contacts

IEPA Curriculum Co-Chairs: Blake-Lesselroth@ouhsc.edu and Jaye-Robertson@ouhsc.edu

IPE Simulation Manager: Kylie-Pethoud@ouhsc.edu

Project Purpose: Develop, pilot, and implement sustainable simulation programming for all students to have a hands-on experience after All Professions Day participation and before graduation.

Description from the 2018 IEPA Curriculum Committee Proposal

IEPA 5A/B: Interprofessional Simulation Experience

Prerequisites: IEPA 1, IEPA 2, IEPA3, IEPA 4, or permission of instructor *^□ 4 clock hrs. each, 8 total

Description: As part of the core experience, learners will complete a series of two simulation courses providing hands-on, interprofessional team experience in a simulated environment to foster academic investigation of interprofessional issues. Participants will complete a recorded simulation using a standardized patient, followed by a self-reflective paper. Case study topic may vary by semester and section number. The course will begin in the fall and complete in the spring semesters. Course may be repeated. IPE Core Course.

Course Components: Didactic and Laboratory/Simulation

Delivery method: Varies

Proposed 2020-2021 Programming

Simulation	Goal:	Frequency	Case Status	Deliverable
COVID-Response Eating Disorders	Practice team-based telehealth consultation	1 x Month	Pilot	Yes
SAME/FAME	ID/DD exposure	1 x Month	Pilot	Yes
LGBTQ	LGBTQ exposure	1 x Month	Pilot	Yes
Intro to Telehealth Visits <ul style="list-style-type: none">• Street Outreach• EPIC• Unity	Prepare for clinic	TBD	Need created as prep for clinic delivery	Pending
Palliative Care/Breaking Bad News	Team Communication	Every other Friday	Pending funding	Yes
Trauma Simulation	Exposure to continuity of care for team members	1 per year	Pending build out	7-16-21 Proposing 1 x Semester to PA

Interprofessional Simulation Plans – Working Draft

Last update 7/22/21

Tasks

- Review Literature/Evidence
- Build Case Template to send out to programs
- Set schedule
- Contact programs to determine interest/participation in pilots

Additional Menu Options In Development/Requested

	Title	Owner	Description	Delivery	Next Schedule
1.	Academic Alignment Initiatives	Colleges, OVPAAFD, IPE	Academic Deans are meeting to find competency alignment in their curriculum maps to offer IPE hands-on/sim activities. Once identified, activities will be piloted as soon as possible.	Pending	TBA
2.	IHI Simulation	IHI, Sim Subcomm	Patient-safety/medical error simulation	In-Person	Halloween
3.	Poverty Simulation	SW	In-person sim for groups of 70+ with facilitated IPE debrief	In-Person	TBA
4.	In Her Shoes	SW	Domestic Violence Simulation	In Person	TBA
5.	Leadership Sim	CON	Leadership simulation with pending pilot for second application.	In person	TBA
6.	Opioid Sim	IPE	Proposed coursework reviewing pain management or opioid deprescribing scenario	Virtual	TBA

2021-22 IPE Clinic “Unity Clinic” Opportunities

Information Sheet Update 7-8-2021

The following initiatives are currently planned by the Interprofessional Educators & Practitioners Association (IEPA) in the Office of Interdisciplinary Programs, under the Office of the Vice Provost for Academic Affairs & Faculty Development and the Unity Clinic Executive Council.

	Mon Evening	Tues Evening	Wed Evening	Thur Evening	Friday AM	Friday PM	Friday AM Outreach
Location	D2L / Zoom Weekly Onboarding	OU Health Family Medicine Clinic	Good Shepherd Clinic	Good Shepherd Clinic	Good Shepherd Clinic	Good Shepherd Clinic	Good Shepherd Clinic w/connection to Cole Community Center
Start Date	8/27/21	2/1/2022	9/8/2021	9/9/2021	9/10/2021	9/10/2021	9/10/2021

Additional Dates to Note:

- Unity Clinic Retreat: August 21, 2021 (location/times TBD)
- Unity Clinic Leadership Simulations: Week of 8/27/21 and 1/24/22
- Monthly Unity Clinic Leadership Meetings: Once per month at lunch, sent by zoom
- Mobile Outreach: Dates TBD

- Purpose: To increase opportunities for hands-on interprofessional education (IPE) clinical experiences, as required for accreditation and/or to address Academic Strategic Plan interdisciplinary initiatives. The long-term goal is for any student on campus to be eligible to participate.
- Who: Students from any program. Flexible team assignments available by location, day, week, month, etc. Academic programs can assign students or allow volunteers.
- Timeline: Begin onboarding August 2021, clinic visits (or telehealth visits) September-May.

“Unity Evening Clinic”

(Student-led IPE Clinical Experience, replacing “EPIC” terminology)

Description: A year-long pilot student-led/faculty-supervised clinic designed and run by IPE student-teams. Evening clinics run 5:00 pm – 9:00 pm.

Locations: Tuesdays at Family Medicine Clinic. Wed/Thursdays at Good Shepherd

“Unity Daytime Friday Clinic”

Description: A year-long pilot student-led/faculty-supervised clinic designed and run by IPE student-teams, incorporated with COM IPE Selective assigned students. May use smaller teams if/where necessary by use case.

Locations: Good Shepherd Clinic with one team 8:00-12:00 and one team 1:00-5:00
Outreach: Cole Community Center Pilot with one team 8:00-12:00

“Unity Mobile Outreach”

Description: The implementation of the Mobile Outreach Vehicle (MOV) in collaboration with the COM HRSA TRU-OK (Tribal, Rural, and medically Underserved of Oklahoma) Grant. Will partner with local clinics and community partners to provide team-based outreach in the community. May use telehealth technology to increase team effectiveness.

Locations: To be determined dates, times, locations

OKCPS/OU HEALTH OUTREACH PROPOSAL

OU Health will pilot coordinated Community Outreach Teams composed of multiple health professions students to provide coordinated on-site/telehealth outreach to Oklahoma City Public Schools for the 2021-22 academic year. Project plan will be determined by a group of stakeholders for the initial pilot to begin in September, 2021.

NEEDS ASSESSMENT

- | | |
|--|--|
| • Since June 1 st , 2021 117,767 Oklahoman's have pre-enrolled in Medicaid. | • 42% of parents with children on Medicaid would now qualify for health insurance. |
| • 78% of those who have become eligible under Medicaid are childless adults. | • 10 OKCPS students make up 10% of FY 2019 OU Health Children's Discharges |
| • Over 60% are in a family with at least one worker. | • 1271 OKCPS Students had greater than two visits in FY2019 |
| • 70% live below the federal poverty line. | • Three zip codes make up the top discharge OU Health Areas: 73109, 73119, 73129 |

OKCPS OVERVIEW



- | | | |
|-------------------------|---|--|
| • 32,000 students | • 135.5 square miles | • 18,000 bilingual |
| • 33 elementary schools | • 4,600 administrators, teachers, and support personnel | • 13,000 English Language Learners. |
| • 13 middle schools | • 2% Asian, 3% Native American, 14% Caucasian, 22% African American, and 54% Hispanic | • 12% with disabilities or special needs |
| • 9 high schools | | • 45,000 meals daily (including breakfast and lunch) |
| • 3 alternative schools | | |

OU HEALTH OVERVIEW



Patient Care

- 804 hospital beds
- \$115 million in charitable care
- 60% patients with complex needs

Education

- 8 participating colleges
- 19 professional programs
- 3,000 learners

Research

- Food is Medicine
- Exercise is Medicine
- Translational science

UNITY CLINIC



As part of the Office of Interdisciplinary Programs (OIDP) in the Office of the Vice Provost for Academic Affairs & Faculty Development at the University of Oklahoma Health Sciences Center, "Unity Clinic" is the term applied to the interprofessional, team-based clinical experience offered to students across campus. As a student-led, faculty-supervised experience, teams provide patient-centered services in the community.

FOCUS ON DIVERSITY

Core to the competency-based foundation of Unity Clinic is a focus on diversity, engagement, and inclusion. This includes ensuring stakeholders are engaged as team-member in planning, programs are intentionally inclusive, and diversity is sought and represented whenever possible.

MOBILE OUTREACH

In collaboration with the College of Medicine TRU-OK (tribal, rural, and medically underserved of Oklahoma) grant project, the OUHSC Office of Diversity, Equity, and Inclusion, and Unity Clinic, a new mobile outreach vehicle (MOV) will pilot mobile outreach beginning in Fall 2021. This includes a project mission to deliver outreach to prospective students, community preceptors, and learning opportunities for health professions students. With a focus on the needs of the community and partnering with local stakeholders, the MOV will be available for site-visits, experiential learning activities, and collaborative health outreach.

TRAUMA-INFORMED CARE (pending update)

Opportunities for collaboration TBD. Through the work of the Department of Pediatrics and the Child Study Center, equity is sought in child trauma outreach services. Current discussions with OKCPS have centered on delivery of three,

one-hour presentations to OKCPS personnel regarding secondary trauma, staff burnout/stress, and behavior problems. The intent is to strategize additional wellness education or mental health delivery throughout the district. Cost of program delivery for program expansion will need to be addressed. Center for Child Abuse & Neglect

TELEHEALTH OUTREACH

Intent to reduce ED visits, OU Health is launching telehealth outreach to OKCPS. Summer 2021, apply for a grant with 5 schools based on SES, data analytics, send telehealth cart to the school, health education, partner with OU Health providers for same-day visits at the school with the school nurse on urgent care needs, may add chronic issues as it develops, need to hook into primary care services, and behavioral health. Support needed: pharmacies, transportation.

PARENT UNIVERSITIES

Following passage of state question 802, July 1, 2021 medicaid expansion was put into effect, ages 19-24. Potentially adding 250-300,000 with access to care. Transitioning care from pediatric to adult care, health literacy. OKCPS Family Connect: <https://sites.google.com/okcps.org/family-engagement-okcps/family-connect>. Will have medical professionals and state resources attending. Hope to host the first event before school starts. Doing video to launch in August. May have navigators, technology, education/counseling, train the trainer (teachers).

OUTREACH HUBS

An opportunity to host outreach activities at a centralized location to invite participants from multiple schools. Will need to identify area, schools, and opportunities to have the greatest reach throughout OKCPS. Unity Clinic can send COTs to these hubs on a scheduled rotation.

COMMUNITY OUTREACH TEAM

Unity Clinic will deploy an interprofessional team, as supervised by OIDP, to partner with OKCPS to deliver team-based outreach. Team composition will include a minimum of two professions from:

- Audiologist
- Dentists
- Dental Hygienist
- Biomedical Researcher
- Medical Imaging
- Physicians
- Physicians Assistants
- Nurses
- Pharmacist
- Speech-Language Pathologist
- Health Care Administrators
- Health Promotion Scientists
- Biostatisticians
- Social Workers
- Physical Therapist
- Occupational Therapist
- Registered Dieticians

PROJECT GOALS

Goals will be determined by stakeholders and may include: improve access to health literacy information, provide health resource information to students, families, and OKCPS personnel, provide information regarding access to care, promote health equity, provide pipeline to admission information.

POSSIBLE SERVICES

Exact services will be a consensus decision between stakeholders including considerations such as:

- Medicaid outreach
- Basic health education
- Precepted health assessments
- Experiential learning
- College information
- Wellness courses

POSSIBLE SCHEDULE

A scaled roll-out plan will include proof of concept in year one with the COT visiting one school per week. Stakeholders will determine which school, and frequency of visits on Fridays. COT will increase sites/visits in subsequent years based on program outcomes and needs determined by stakeholders.

STAKEHOLDERS ON PROJECT TEAM

Name	Organization	Contact Information
TBD	OKCPS	Nancy Perdomo Family Engagement Anika mdherron@okcps.org
TBD	OU Health Strategy - Parent University	Mandy Newman Addison Davis

TBD	OU Health Community Outreach	Halley Reeves
	OU Health Telehealth	Morgan
	OUHSC Center for Child Abuse and Neglect	Dr. Risch
TBD	Unity Clinic <ul style="list-style-type: none"> • MOV Outreach • Vaccines • Medicaid • OK Fresh • YMCA 	Jamaljé Bassue Tram Le Addison Davis Madison Weaver Dr. Joanne Skaggs
TBD	College of Medicine <ul style="list-style-type: none"> • COM Office of Diversity, Inclusion, and Community Engagement 	Robert Salinas Natasha Mickel Candace Teets Lin Goldson
TBD	College of Nursing	Melissa Craft, and others Elizabeth Koldoff
TBD	OUHSC offices <ul style="list-style-type: none"> • Office of Diversity, Equity, and Inclusion • Office of Student Affairs • OK LEND - Sooner Success • CAH Audiology clinic 	Carrie McClain Kate Stanton Megan Peters Erin Benear
	State Partners <ul style="list-style-type: none"> • K20 • Gear Up • State Regents • State Dept of Educ 	
	Other Partners <ul style="list-style-type: none"> • OCCHD • Restore OKC 	

Project Next Steps

To be determined by stakeholders, may include:

- Step #1: MOU: Have a draft, start the process, Felicia Jenkins & Margaret Robinson (not combined with other OU contracts)
- Check with Legal re: consent
- Rahma: Slide on what is to come for Dr. Herron (sent 7/13)
- Mandy: Parent Universities (ongoing)
- Initial Ideas: Diabetes education, oral health care, BMI checks, need scales, family knowledge, how to make better decisions with their resources, what does prediabetes mean, parent universities/family workshops (putting together the training plan, will live on the website, target areas, hub medical visits, 1 virtual school day/month, put on the menu for schools to “order” and create space for assistance, work with parent liaisons, review the universal screener to determine needs), collaborative videos, medicaid expansion, prescribe OK Fresh and YMCA
- Determine exact project goals and objectives
 - Feeder patterns, zip codes for year one, triage what is needed
 - Hubs (field office) find community centers, ymca, crossings, could run transportation on these days
 - Parent universities with Nancy
 -
- Determine exact COT services, delivery sites, and frequency
- Determine project evaluation plan
- Determine initial pilot for Sept 2021, set timeline for 2021-22, and scaling plan

The below list of Interdisciplinary Student Council members and faculty contacts are identified as point-of-contact liaisons for each college.

Please contact our Office of Interdisciplinary Programs for updates or additional faculty contacts:

Sarah Cable, sarah-cable@ouhsc.edu

College/Group	Student Representative(s)	Email	Faculty/Staff Contact	Email
Allied Health	Gabriela Pinos	gabriela-pinos@ouhsc.edu	Denise Gaffigan Bender, PT, J.D., M.Ed.	denise-bender@ouhsc.edu
Dentistry	Raman Saha	raman-saha@ouhsc.edu	Marsha Beatty, BS, MPH	marsha-beatty@ouhsc.edu
Graduate	Annie Doyle	annie-doyle@ouhsc.edu	Amy Tucker, PhD	amy-tucker@ouhsc.edu
Medicine-MD	Colton Hill	colton-hill@ouhsc.edu	Lin Goldston, MHA, CPHQ	lin-goldston@ouhsc.edu
Medicine-PA	TBD	TBD	Bruna Varalli-Claypool, MHS, PA-C	bruna-varalli-claypool@ouhsc.edu
Nursing	Lauren Schenian	lauren-schenian@ouhsc.edu	Sheryl Buckner, PhD, RN, ANEF	sheryl-buckner@ouhsc.edu
Pharmacy	Trenton Flanagan & Gabrielle Ford	trenton-flanagan@ouhsc.edu & gabrielle-ford@ouhsc.edu	Vincent Dennis, Pharm.D., BCACP, CDE	vincent-dennis@ouhsc.edu
Public Health	Addison Davis	addison-davis@ouhsc.edu	Edwin (Gerry) Ibay, JD, MPH	edwin-ibay@ouhsc.edu
Lumina	David Soto	david-soto@ouhsc.edu	Lin Goldston, MHA, CPHQ & Ruby Sharif-Sandel, MD, PhD	lin-goldston@ouhsc.edu & rabab-sharif@ouhsc.edu
SGA	Rachel Tran & Rhodes Simons	rachel-tran@ouhsc.edu & rhodes-simons@ouhsc.edu	Samuel Betty, M.Ed	samuel-betty@ouhsc.edu
ISC Chair and Vice Chair	Dominique Ropp & Jeremiah McGuire	dominique-ropp@ouhsc.edu & jeremiah-mcguire@ouhsc.edu	Lin Goldston, MHA, CPHQ & Ruby Sharif-Sandel, MD, PhD	lin-goldston@ouhsc.edu & rabab-sharif@ouhsc.edu